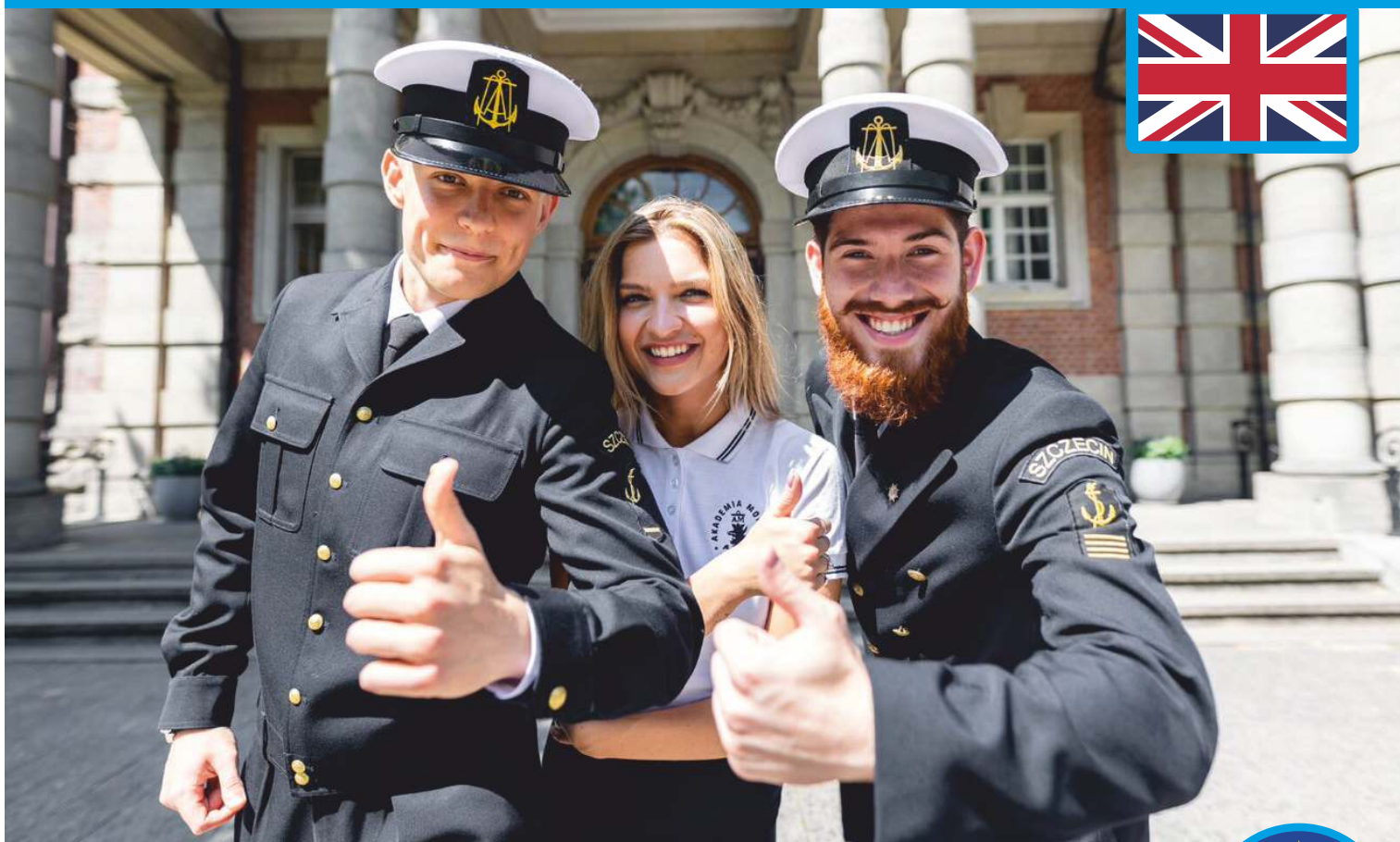


Maritime University of Szczecin



2022 | Prospectus of programmes delivered in English



CONTENTS

1. About MUS
2. Bsc in Navigation
3. Bsc in Mechanical Engineering
4. Msc in Mechanical Engineering
5. Msc in Transport
6. Student accommodation
7. Scholarships and benefits
8. Cost of studying at MUS
9. Work while studying
10. Student life
11. Applying step by step

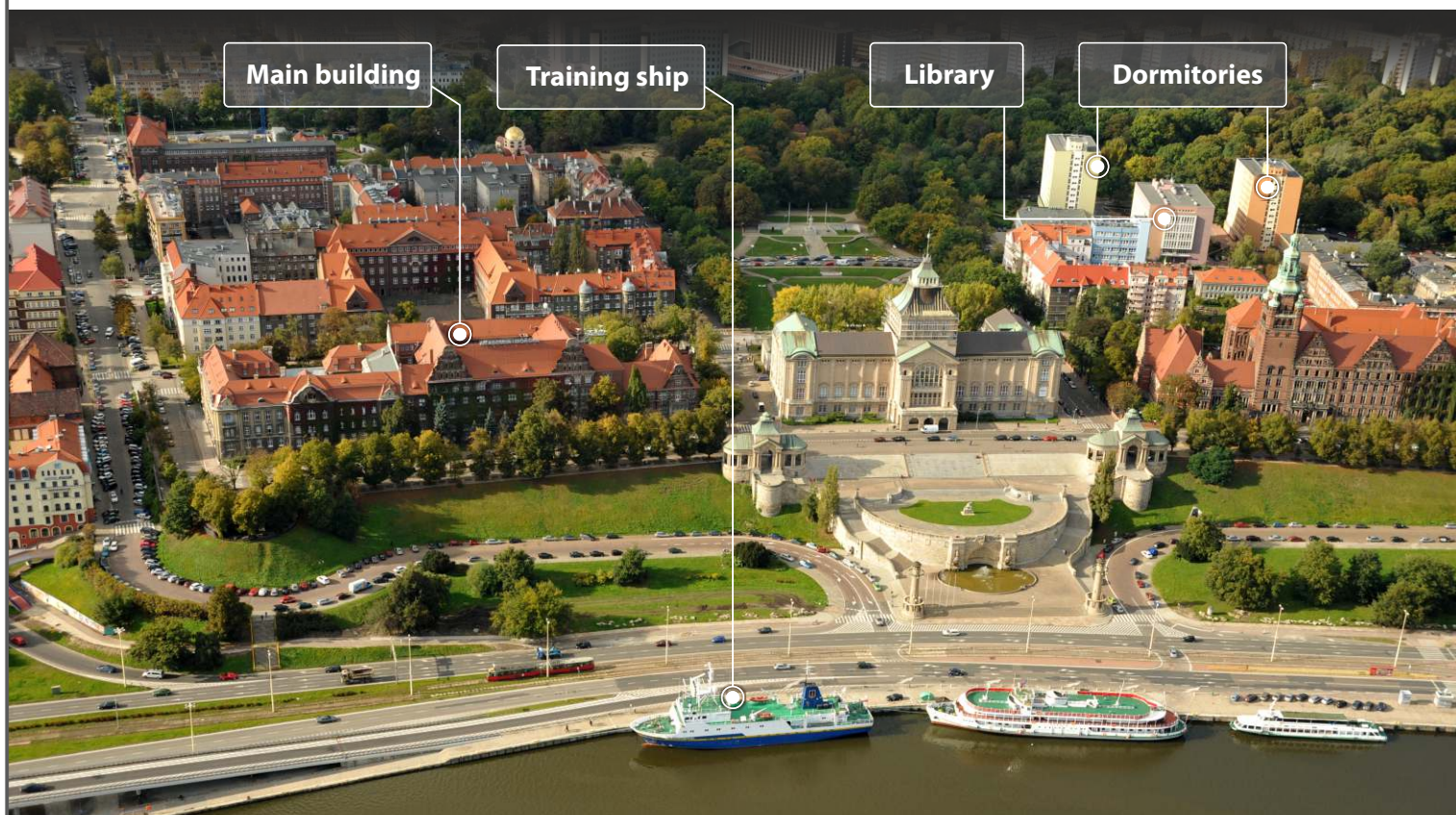


1 About MUS



Our mission is
To train the best seamen in the world

Type of university Public (state)	Established 1947	Number of students ca. 2,750	Quality of programmes STCW compliant*
---	----------------------------	--	---



International community

400 foreign students from 20 countries

Co-educational programmes

30% of students are women

4 programmes delivered in English

i.e. BSc in Navigation, BSc & MSc in Mechanical Engineering, MSc in Transport, and 21 other programmes in Polish

15 sport sections, award-winning choir

Own dormitories in the very city centre

prices starting from EUR 90 per month

intensive foreign language courses

English, German or Spanish

hi-tech labs, a training vessel, simulators

incl. advanced Full Mission Ship Simulator

Affordable tuition fees and living costs

Scholarships and bursaries available

* The International Convention on Standards of Training, Certification and Watchkeeping for Seafarers



More about the University

<https://marine-edu.com/en/about-the-university>

2

Bsc in Navigation



Specialisation area

Maritime Transport

Tuition fee per year

PLN 2,300

ca. EUR 511

Duration

4,0 years

Deadline for application

19 July 2022

Profile

Sea-going

GRADUATE PROFILE:

MUS graduates can start working aboard any ship under a flag of any country because our diplomas are recognised worldwide. On graduation and having completed 12 months of sea-time they receive the Officer of the Watch rank (OOW) which is the first steps in their seafaring career. With total sea service time of over five years and a central national exam successfully passed, graduates of our Navigation programme can become captains of sea-going or inland vessels. Working with marine services or commercial fleets offers satisfaction, high salary, as well as daily portion of challenge and adventure.

ENTRY REQUIREMENTS:

- **Upper secondary school-leaving certificate** giving its holder the right to apply for admission to higher education institution of any type in the country in which the certificate was issued;
- **Medical Certificate for seafarers;**
- **English proficiency proof at B2 level.**

For more detailed information on the required documents go to page **11**

Employment options in brief:

- sea and inland water vessels;
- international shipping;
- merchant fleet, fishing fleet, passenger ships;
- oil drilling and production platforms;
- on-shore operation and technical services;
- maritime administration;
- classification institutions and SAR services.



More about the programme

<https://marine-edu.com/en/1st-degree-studies-bachelor/navigation-en>

3

Bsc in Mechanical Engineering

Specialisation area

Operation of Marine Power Plants

Tuition fee per year

PLN 2,300

ca. EUR 511

Duration

4,0 years

Deadline for application

19 July 2022

Profile

Sea-going

GRADUATE PROFILE:

MUS graduates can start working aboard any ship under a flag of any country because our diplomas are recognised worldwide. On graduation and having completed 12 months of sea-time they receive the Engineering Officer of the Watch rank (EOOW). With total sea service time of over 5 years and a central national exam successfully passed, graduates of our Mechanical Engineering programme can become a chief engineer on sea-going or inland vessels. Working with marine services or commercial fleets offers satisfaction, high salary, as well as daily portion of challenge and adventure.

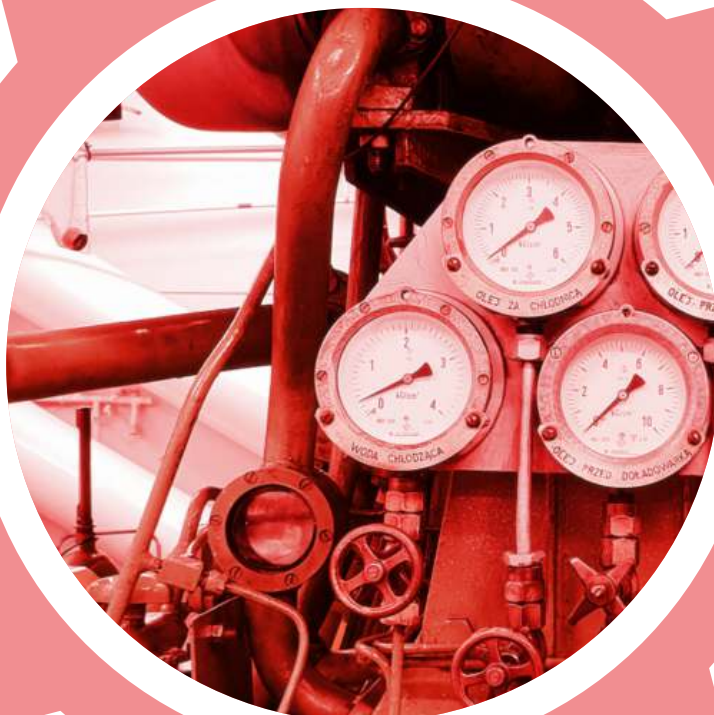
ENTRY REQUIREMENTS:

- **Upper secondary school-leaving certificate** giving its holder the right to apply for admission to higher education institution of any type in the country in which the certificate was issued;
- **Medical Certificate for seafarers;**
- **English proficiency proof at B2 level.**

For more detailed information on the required documents go to page **11**

Employment options in brief:

- marine vessel engineering department;
- repair shipyard;
- maintenance departments;
- electrical power generation;
- on-shore and off-shore wind farm operation enterprises;
- electrical device production plants;
- power plants as well as electrical power and heating plants;
- manufacturers of supporting constructions, fixture, insulation devices and systems.



More about the programme

<https://marine-edu.com/en/1st-degree-studies-bachelor/mechanical-engineering-programme-delivered-in-english>

4

Msc in Mechanical Engineering

Specialisation area

Construction and Operation of Marine Energy Systems

Tuition fee per year

PLN 2,560

ca. EUR 569

Duration

1,5 years

Deadline for application

19 July 2022

Profile

Non sea-going

GRADUATE PROFILE:

A graduate of this field of study is awarded the degree of magister inżynier (corresponding to Master of Engineering). The person may perform the function of an officer in the marine vessel engineering department or may be employed in a repair / maintenance shipyards / production plants etc. The profile of the programme being entirely academic allows students to pursue further study or take up research / teaching university career.

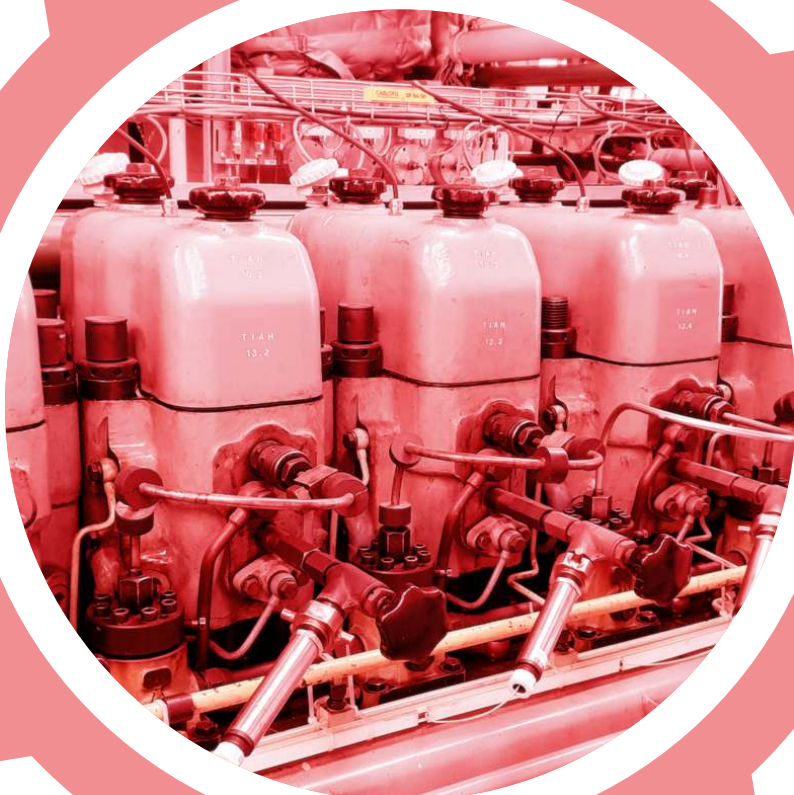
ENTRY REQUIREMENTS:

- **1st cycle / undergraduate higher education diploma in engineering** giving its holder the right to apply for admission to 2nd cycle / graduate higher education programme in the country in which the diploma was issued;
- **English proficiency proof at B2 level.**

For more detailed information on the required documents go to page **11**

Employment options on management level positions

The success stories of our graduates show, that they are able to perform exceptionally well, not only in areas specific to the maritime economy but also in the field of the energy and mining industry or processing and chemical industry, wherever knowledge and skills in the domain of maintenance, diagnostics and repair of mechanical devices are required

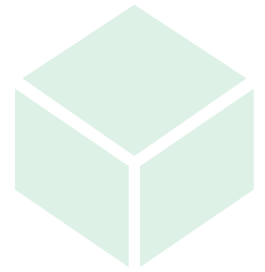


More about the programme

<https://marine-edu.com/en/2nd-degree-studies-master/mechanical-engineering-programme-delivered-in-english-graduate>

5

Msc in Transport



Specialisation area

Intelligent transportation systems

Tuition fee per year

PLN 2,100

ca. EUR 467

Duration

1,5 years

Deadline for application

21 Mar 2022

Profile

Non sea-going

GRADUATE PROFILE:

Graduates of this field of study are specialists within the scope of modern cargo transport, operation of integrated transport terminals and logistic centres as well as organisation of the "house to house" transport chain. They have the ability to use information technology in their professional work. They are prepared to work on managerial positions in operation, design and construction departments in business entities related to transport, logistics and shipping.

ENTRY REQUIREMENTS:

- **1st cycle / undergraduate higher education diploma in engineering** giving its holder the right to apply for admission to 2nd cycle / graduate higher education programme in the country in which the diploma was issued;
- **English proficiency proof at B2 level.**

For more detailed information on the required documents go to page **11**



Employment options on management level positions:

- departments of transport systems design and operation;
- departments of logistics and shipping in a wide variety of companies and their business partners;
- transport-related institutions;
- public administration authorities.



More about the programme

<https://marine-edu.com/en/2nd-degree-studies-master/transport-programme-delivered-in-english-graduate>

6 Student accommodation

The University campus is located in the very centre of the city, just a 5-minute walk from the University's main building at Wały Chrobrego. It is composed of two student dormitories named KORAB and PASAT - both are located in the vicinity of beautiful Żeromski Park, not far from Rodła Square - city's major public transport junction which makes any part of Szczecin easily available from this point.



Single, double or triple rooms with standard equipment (single or bunk beds, cupboards, wardrobes, tables) are available, with 4 rooms sharing 1 bathroom. There is a kitchen on each floor with an electric cooker and a washbasin.

Student residents can also use: study rooms, washing rooms with automatic washing machines, ironing rooms, leisure rooms for table tennis, aerobics or dance, TV rooms with cable TV access, deposit room.

The total capacity of the dormitories is 894 students. There are 33 single rooms, 192 double rooms and 159 triple rooms. A room in the dormitory is guaranteed for all foreigners.

Monthly price for each room type:

SINGLE	DOUBLE	TRIPLE
PLN 540 ca. EUR 120	PLN 390 ca. EUR 84	PLN 380 ca. EUR 87



More about the campus

<https://www.am.szczecin.pl/en/facilities/campus/>

7

Scholarships and benefits

Type of scholarship	How much?	Who can apply?
 <p>RECTOR'S SCHOLARSHIP (for outstanding academic achievements)</p>	<p>PLN 400-900 per month</p>	<p>10% of second-, third- and fourth-year students who achieved the best academic results in the previous academic year in a given field of study (full-time and part-time) and who passed all courses on time.</p>
 <p>RECTOR'S SCHOLARSHIP (for scientific, artistic or sports achievements)</p>	<p>PLN 200-900 per month</p>	<p>Students from their first year of studies with significant achievements other than academic</p> <p>For example laureates of an international Olympiad or laureates or finalists of a central-level Olympiad, students in their second, third and fourth year of studies with significant achievements related to science, art or sports in international or national competitions.</p>
 <p>MAINTENANCE GRANT</p>	<p>PLN 50-1050 per month</p>	<p>Students who have a Polish Card, a Permanent Residence Card, refugee status or for other reasons study under the same conditions as Polish citizens and are in a difficult financial situation, i.e. whose monthly net income per person in the family is lower than PLN 1050.71 net.</p>
 <p>INCREASED MAINTENANCE GRANT (housing allowance)</p>	<p>PLN 200 per month</p>	<p>Students receiving a maintenance grant who are in a difficult financial situation</p> <p>For example students covering the costs of accommodation in dormitory or in another flat, provided that the daily commute from the place of permanent residence to the University would make studying impossible or significantly more difficult.</p>
 <p>SPECIAL ALLOWANCE</p>	<p>max. PLN 1200 max. twice a year</p>	<p>All students who find themselves temporarily in a difficult financial situation due to unfortunate or extra cost-generating events</p> <p>Such events include death of a family member, birth of a child, illness, accident, etc. The allowance is awarded regardless of other scholarships and bursaries.</p>
 <p>DISABLED STUDENTS' ALLOWANCE</p>	<p>PLN 500-900 per month</p>	<p>Students holding a disability certificate</p> <p>The amount of the allowance depends on the degree of disability. Persons with a disability certificate of light degree receive PLN 500 per month, moderate degree PLN 700 per month, severe degree PLN 900 per month. The certificate must be issued in Poland.</p>



More about Scholarships

<https://marine-edu.com/en/fees-and-funding/scholarships-and-bursaries>

8

Cost of studying at MUS

Admission fee - required during admissions.

Seaman's book - This cost only applies to seagoing programmes. The fee is paid in euro.

International Medical Certificate for Service at Sea - The amount given is the average cost of such a certificate in Poland and it may be different in other countries. Please note, that the certificate must be renewed at least every 2 years, which is included in the calculation below. This cost only applies to seagoing programmes.

Accommodation - The amount given is for a double room in the University dormitory.

Cost of living - The amount given includes costs of food, phone, public transport and other minor expenditures. These costs may of course vary depending on the student's lifestyle.




Health insurance at the National Health Fund covers most of the medical services in Poland. Holders of the European Health Insurance Card (EHIC) do not have to take it out. In case you are not a holder of such a card, your health insurance at the National Health Fund will be paid by MUS.

Annual tuition fee depends on the programme chosen.

Types of costs

Costs incurred by students	PLN	EUR	Frequency
Admission fee	85	19	one-time
Seaman's book	225	50	one-time
Medical Certificate	400	89	every 2 years
Accommodation	390	87	monthly
Cost of living	1,000	222	monthly
Health insurance	0	0	—
Tuition fee	from 10,500 to 12,500	from 2,333 to 2,778	annually

Total costs each year

Programme		1st year	2nd year	3rd year	4th year
 Navigation	Bsc	PLN 16,910 EUR 3,758	PLN 16,200 EUR 3,600	PLN 9,650 EUR 2,144	PLN 9,250 EUR 2,056
	Bsc	PLN 16,910 EUR 3,758	PLN 16,200 EUR 3,600	PLN 9,650 EUR 2,144	PLN 16,200 EUR 3,600
 Mechanical Engineering	Msc	PLN 16,545 EUR 3,677	PLN 8,230 EUR 1,829	—	—
	Msc	PLN 16,085 EUR 3,574	PLN 8,000 EUR 1,778	—	—
 Transport	Msc	PLN 16,085 EUR 3,574	PLN 8,000 EUR 1,778	—	—

The above calculation does not cover the costs incurred by students each year during 2 months of the summertime and the time of seagoing placement, which last one semester for BSc in Mechanical Engineering and two semesters for BSc in Navigation.

The cost of transport to Poland and back to the student's home country is not included in the above calculations.

It was assumed that EUR 1 = PLN 4.5.



More about costs of studying

<https://marine-edu.com/en/fees-and-funding/costs-of-living-in-szczecin>

9

Work while studying

KEHINDE VICTOR

I am a second year student of navigation delivered in English. I work part time at KFC in Kascada Shopping Mall as a chef and production staff. I make burgers and every product you can find on the KFC menu. I earn PLN 18.30 / hour Working here is quite flexible, fun and interesting. As a staff member I have multiple bonuses and discounts. This job requires doggedness and good conduct. I recommend it for students who are looking for additional income at their free hours.



KEHINDE VICTOR

ISMAIL DURUSAN

ADEYEMI SEGUN

ISMAIL DURUSAN

When the pandemic started I had to make some extra cash. By the end of the school day I wasn't physically tired so I could go out and earn by delivering food. Even though I didn't work for a long time I made enough to get me going. In delivery you get paid per delivery so your wage depends on how many orders you delivered. After a school day I could start working as long as I wanted, so depending on the situation daily wage PLN 50-100 was achievable.

ADEYEMI SEGUN

I currently study marine navigation at the Maritime University of Szczecin. The good thing about studying at MUS is that you can work part-time. I currently work as a Technical Support Agent in a Business Process Outsourcing Company here in Szczecin. I earn PLN 18 / hour. And I can say I love it at my place of work as much as I love it at MUS.

part time
Job

If you would like to earn **extra money** while studying our Career's Office will help you in finding a part-time **job**

Depending on the current job offers, for example you can **choose to work part-time** as a non-qualified worker in a factory, a restaurant, a shop, an office, a food delivery and many other places.

Basic knowledge of the Polish language is very useful at work, although sometimes it is not required.

In Poland, since 2022 **the minimum wage** for students under the age of 26

is PLN 19.70

>>> net per hour <<<
(approx. EUR 4.4 net per hour).

Full time students **are allowed** to work in Poland

legally

without a work permit.



More about working in Poland

<https://marine-edu.com/en/fees-and-funding/working-in-poland>

10 Student life



Integration events



Swimming pool



Cooking together



15 sport sections



Shooting range



Award-winning choir

11 Applying step by step

How to apply?

3 easy steps to submit an application

1 Collect the required application documents

Our university has implemented an innovative, user-friendly online tool that generates a list of required documents tailored to each candidate. The only thing you need to do is to answer a few simple questions.

2 Complete the online application form

Before you start, we suggest you to prepare your passport, your photo in JPG or PNG format and good quality scans of your documents in PDF format. If you are done with it, go to our admission system: <https://irk.am.szczecin.pl/>

3 Pay the application fee

The application fee is **PLN 85**, i.e. about **EUR 20**. Payment of the application fee may be carried out in two ways: online or by traditional bank transfer. The details of our bank account can be easily found on our website.

If you have any questions, do not hesitate to contact our admission officers:



+48 601 329 781



+48 91 48 09 345 or +48 91 48 09 965



international@am.szczecin.pl

After submitting an application

4 Verification procedure

Now you have to wait until your application is verified by our admission officer. You will be informed by e-mail about any deficiencies in your application that need to be corrected as well as about any change in the status of your application.

5 Admission decision – tuition fee payment – visa

If you are admitted to our University, you will receive an **admission decision**. Now you will have to pay the tuition-fee and start applying for a visa if necessary. If your documents haven't been fully legalised so far, it is time to take care of it.

6 Enrolment

After arrival to our University, we will ask you to submit all the original documents in paper form. If they are fine, you can collect a student ID card and start your adventure in our University.



More about applying

<https://marine-edu.com/en/admissions/application-step-by-step>